


Please check the examination details below before entering your candidate information

Candidate surname					Other names				
Pearson Edexcel		Centre Number			Candidate Number				
International GCSE		<input type="text"/> <input type="text"/> <input type="text"/> <input type="text"/> <input type="text"/>			<input type="text"/> <input type="text"/> <input type="text"/> <input type="text"/> <input type="text"/>				
Monday 15 June 2020									
Afternoon (Time: 2 hours)					Paper Reference 4PM1/01				
Further Pure Mathematics									
Paper 1									
Calculators may be used.								Total Marks	

Instructions

- Use **black** ink or ball-point pen.
- **Fill in the boxes** at the top of this page with your name, centre number and candidate number.
- Answer **all** questions.
- Without sufficient working, correct answers may be awarded no marks.
- Answer the questions in the spaces provided
– *there may be more space than you need.*
- You must **NOT** write anything on the formulae page.
Anything you write on the formulae page will gain NO credit.

Information

- The total mark for this paper is 100.
- The marks for **each** question are shown in brackets
– *use this as a guide as to how much time to spend on each question.*

Advice

- Read each question carefully before you start to answer it.
- Check your answers if you have time at the end.

Turn over ►

P62280A

©2020 Pearson Education Ltd.

1/1/1/1/



Pearson

International GCSE in Further Pure Mathematics Formulae sheet

Mensuration

Surface area of sphere = $4\pi r^2$

Curved surface area of cone = $\pi r \times$ slant height

Volume of sphere = $\frac{4}{3}\pi r^3$

Series

Arithmetic series

Sum to n terms, $S_n = \frac{n}{2}[2a + (n-1)d]$

Geometric series

Sum to n terms, $S_n = \frac{a(1-r^n)}{(1-r)}$

Sum to infinity, $S_\infty = \frac{a}{1-r}$ $|r| < 1$

Binomial series

$$(1+x)^n = 1 + nx + \frac{n(n-1)}{2!}x^2 + \dots + \frac{n(n-1)\dots(n-r+1)}{r!}x^r + \dots \quad \text{for } |x| < 1, n \in \mathbb{Q}$$

Calculus

Quotient rule (differentiation)

$$\frac{d}{dx} \left(\frac{f(x)}{g(x)} \right) = \frac{f'(x)g(x) - f(x)g'(x)}{[g(x)]^2}$$

Trigonometry

Cosine rule

In triangle ABC : $a^2 = b^2 + c^2 - 2bc \cos A$

$$\tan \theta = \frac{\sin \theta}{\cos \theta}$$

$$\sin(A+B) = \sin A \cos B + \cos A \sin B$$

$$\sin(A-B) = \sin A \cos B - \cos A \sin B$$

$$\cos(A+B) = \cos A \cos B - \sin A \sin B$$

$$\cos(A-B) = \cos A \cos B + \sin A \sin B$$

$$\tan(A+B) = \frac{\tan A + \tan B}{1 - \tan A \tan B}$$

$$\tan(A-B) = \frac{\tan A - \tan B}{1 + \tan A \tan B}$$

Logarithms

$$\log_a x = \frac{\log_b x}{\log_b a}$$

DO NOT WRITE IN THIS AREA

DO NOT WRITE IN THIS AREA

DO NOT WRITE IN THIS AREA



Answer all ELEVEN questions.

Write your answers in the spaces provided.

You must write down all the stages in your working.

1 Differentiate with respect to x

$$6e^{3x^2} \cos 2x$$

(3)

DO NOT WRITE IN THIS AREA

DO NOT WRITE IN THIS AREA

DO NOT WRITE IN THIS AREA

(Total for Question 1 is 3 marks)



2 (a) Using the axes below sketch the line with equation

$$(i) \ y = 6 \quad (ii) \ y + x = 10 \quad (iii) \ y = 2x - 5$$

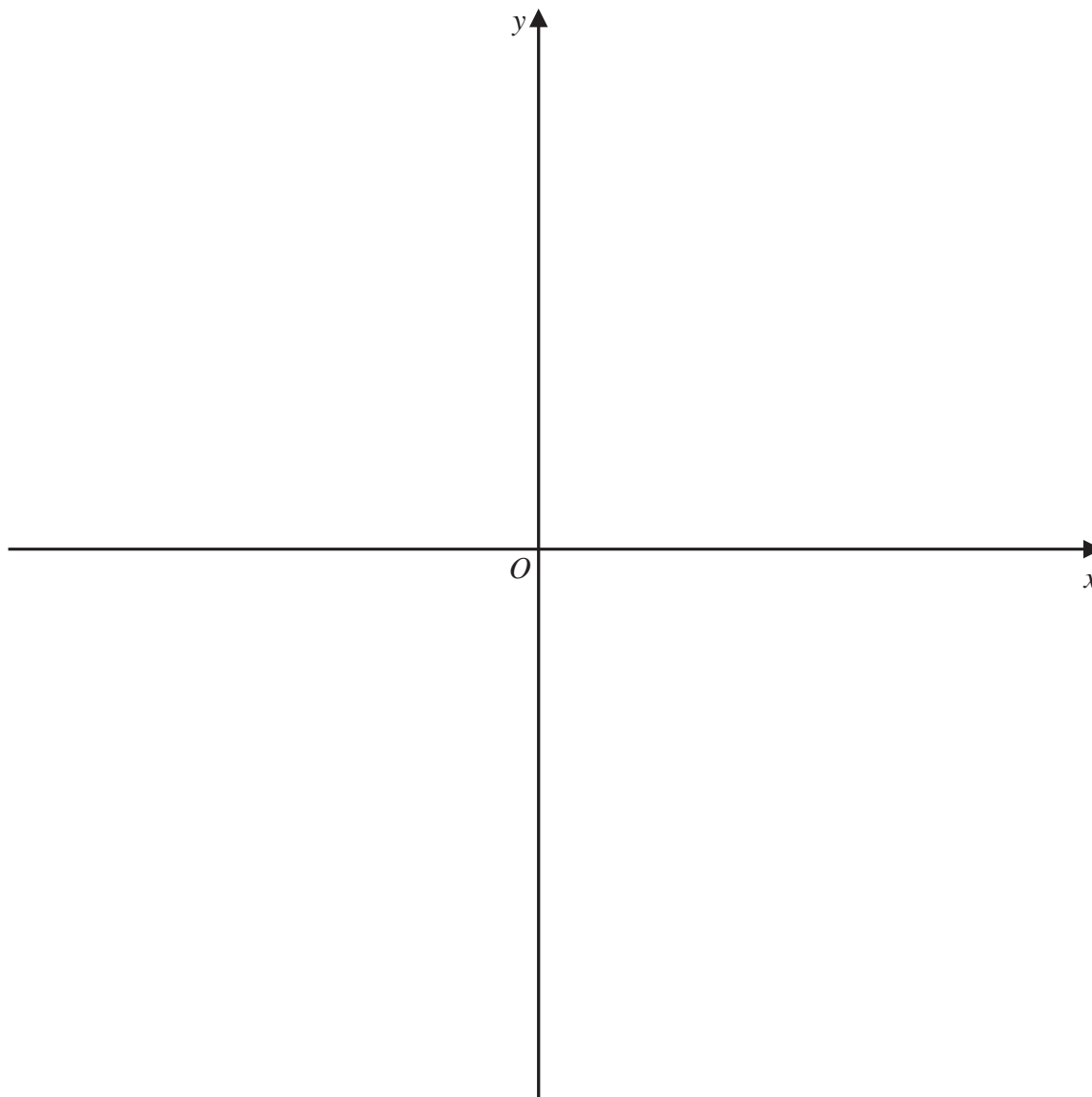
Show the coordinates of any point where each line crosses the coordinate axes.

(3)

(b) Show, by shading on your sketch, the region R defined by the inequalities

$$y \leq 6 \quad y + x \leq 10 \quad y \geq 2x - 5 \quad x \geq 0$$

(1)



DO NOT WRITE IN THIS AREA

DO NOT WRITE IN THIS AREA

DO NOT WRITE IN THIS AREA



Question 2 continued

DO NOT WRITE IN THIS AREA

DO NOT WRITE IN THIS AREA

DO NOT WRITE IN THIS AREA

Area with horizontal dotted lines for writing.

(Total for Question 2 is 4 marks)



Question 3 continued

DO NOT WRITE IN THIS AREA

DO NOT WRITE IN THIS AREA

DO NOT WRITE IN THIS AREA

Area with horizontal dotted lines for writing.

(Total for Question 3 is 9 marks)



4

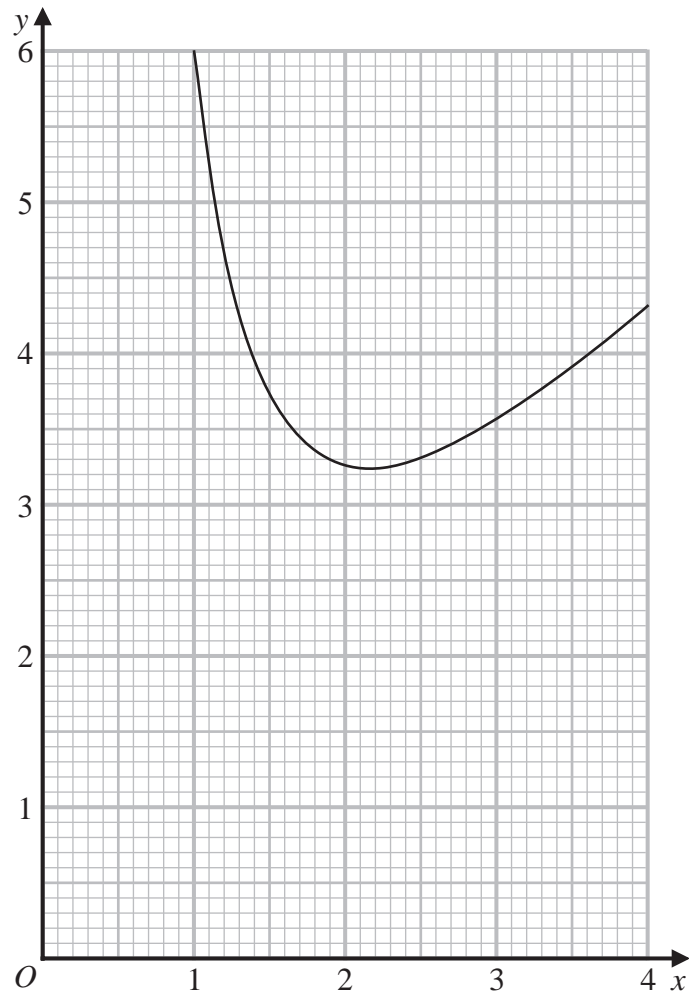


Figure 2

Figure 2 shows the graph of $y = x + \frac{5}{x^2}$ for $1 \leq x \leq 4$ drawn on a grid.

- (a) By drawing a suitable straight line on the grid, obtain estimates, to one decimal place, for the roots of the equation

$$x^3 - 4x^2 + 5 = 0$$

in the interval $1 \leq x \leq 4$

(3)

- (b) By drawing a suitable straight line on the grid, obtain an estimate, to one decimal place, for the root of the equation

$$x^3 - x^2 - 5 = 0$$

in the interval $1 \leq x \leq 4$

(4)

DO NOT WRITE IN THIS AREA

DO NOT WRITE IN THIS AREA

DO NOT WRITE IN THIS AREA

8



Question 4 continued

DO NOT WRITE IN THIS AREA

DO NOT WRITE IN THIS AREA

DO NOT WRITE IN THIS AREA

Area with horizontal dotted lines for writing.

(Total for Question 4 is 7 marks)



5 The points P , Q , R and S have coordinates $(4, 7)$, $(3, 0)$, $(10, 1)$ and $(11, 8)$ respectively.

(a) Show, by calculation, that the lines PR and QS are perpendicular.

(3)

(b) Find the exact lengths of (i) PR (ii) QS

(2)

(c) Find the area of the quadrilateral $PQRS$

(2)

DO NOT WRITE IN THIS AREA

DO NOT WRITE IN THIS AREA

DO NOT WRITE IN THIS AREA



Question 5 continued

DO NOT WRITE IN THIS AREA

DO NOT WRITE IN THIS AREA

DO NOT WRITE IN THIS AREA

Area with horizontal dotted lines for writing.

(Total for Question 5 is 7 marks)



6 An arithmetic series A has first term a and common difference d .

The sum S_n of the first n terms of A is given by $S_n = n(15 + 2n)$

(a) Find the value of a and the value of d .

(4)

(b) Find the 20th term of A .

(2)

Given that $S_{2p} - 2S_p = 1 + S_{(p-1)}$

(c) find the value of p .

(4)

DO NOT WRITE IN THIS AREA

DO NOT WRITE IN THIS AREA

DO NOT WRITE IN THIS AREA



Question 6 continued

DO NOT WRITE IN THIS AREA

DO NOT WRITE IN THIS AREA

DO NOT WRITE IN THIS AREA

Area with horizontal dotted lines for writing.

(Total for Question 6 is 10 marks)



7

$$f(x) = x^2 - 9x + 14$$

Given that $f(x)$ can be written in the form $(x + a)^2 + b$, where a and b are constants,

(a) find the value of a and the value of b . (2)

(b) Hence, or otherwise, find

(i) the minimum value of $f(x)$

(ii) the value of x for which this minimum occurs. (2)

The curve C has equation $y = f(x)$

The line l has equation $y = x + 5$

(c) Use algebra to find the coordinates of the points of intersection of C and l . (4)

(d) Use algebraic integration to find the exact area of the finite region bounded by C and l . (5)

DO NOT WRITE IN THIS AREA

DO NOT WRITE IN THIS AREA

DO NOT WRITE IN THIS AREA



Question 7 continued

DO NOT WRITE IN THIS AREA

DO NOT WRITE IN THIS AREA

DO NOT WRITE IN THIS AREA

Area with horizontal dotted lines for writing.



Question 7 continued

Area with horizontal dotted lines for writing.

DO NOT WRITE IN THIS AREA

DO NOT WRITE IN THIS AREA

DO NOT WRITE IN THIS AREA



Question 7 continued

DO NOT WRITE IN THIS AREA

DO NOT WRITE IN THIS AREA

DO NOT WRITE IN THIS AREA

Area with horizontal dotted lines for writing.

(Total for Question 7 is 13 marks)



Question 8 continued

DO NOT WRITE IN THIS AREA

DO NOT WRITE IN THIS AREA

DO NOT WRITE IN THIS AREA

Area with horizontal dotted lines for writing.



Question 8 continued

Area with horizontal dotted lines for writing.

DO NOT WRITE IN THIS AREA

DO NOT WRITE IN THIS AREA

DO NOT WRITE IN THIS AREA



Question 8 continued

DO NOT WRITE IN THIS AREA

DO NOT WRITE IN THIS AREA

DO NOT WRITE IN THIS AREA

Area with horizontal dotted lines for writing.

(Total for Question 8 is 10 marks)



9

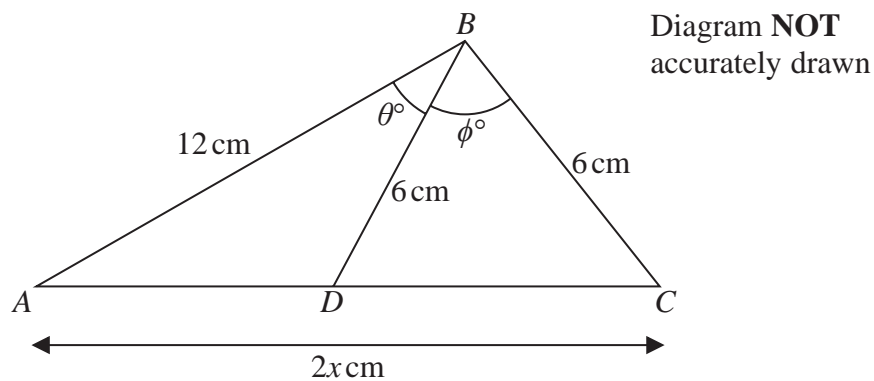


Figure 3

Figure 3 shows triangle ABC with $AB = 12$ cm, $BC = 6$ cm and $AC = 2x$ cm.

The point D is the midpoint of AC and $BD = 6$ cm.

$\angle ABD = \theta^\circ$ and $\angle DBC = \phi^\circ$ where $\theta \neq 0$ and $\phi \neq 0$

(a) Show that $\cos ADB = \frac{x^2 - 108}{12x}$ (2)

(b) Hence, or otherwise, show that $AC = 6\sqrt{6}$ cm. (4)

(c) Show that $\sin(\theta^\circ + \phi^\circ) = \sin \phi^\circ$ (4)

(d) Hence show that $\theta = 180 - 2\phi$ (2)

DO NOT WRITE IN THIS AREA

DO NOT WRITE IN THIS AREA

DO NOT WRITE IN THIS AREA



Question 9 continued

DO NOT WRITE IN THIS AREA

DO NOT WRITE IN THIS AREA

DO NOT WRITE IN THIS AREA

Area with horizontal dotted lines for writing.



Question 9 continued

Area with horizontal dotted lines for writing.

DO NOT WRITE IN THIS AREA

DO NOT WRITE IN THIS AREA

DO NOT WRITE IN THIS AREA



Question 9 continued

DO NOT WRITE IN THIS AREA

DO NOT WRITE IN THIS AREA

DO NOT WRITE IN THIS AREA

Area with horizontal dotted lines for writing.

(Total for Question 9 is 12 marks)



10

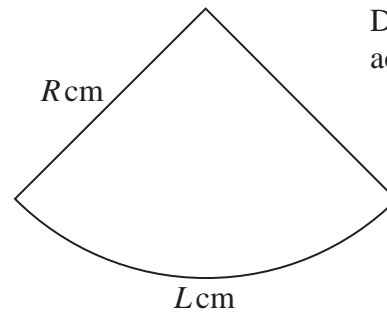
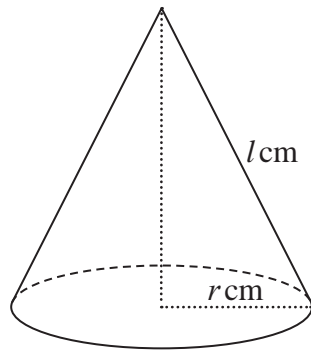


Diagram NOT accurately drawn

Figure 4

Figure 4 shows a right circular cone with base radius $r \text{ cm}$ and slant height $l \text{ cm}$.
Figure 4 also shows a sector of a circle with radius $R \text{ cm}$ and arc length $L \text{ cm}$.

The area of the curved surface of the cone is $A \text{ cm}^2$

By considering how the sector of the circle can be folded to exactly form the curved surface of the cone with R and L suitably chosen,

- (a) prove that $A = \pi r l$ (4)

Sand is poured onto a horizontal surface at a constant rate of $1.5 \text{ cm}^3/\text{s}$.
The sand forms a pile in the shape of a right circular cone with its base on the surface.
The curved surface area of the cone, $A \text{ cm}^2$, increases in such a way that the height of the cone is always three times the radius of the base of the cone.

Given that $\frac{dA}{dr} = k\pi r$, where k is a constant,

- (b) find the exact value of k . (3)
- (c) Calculate the rate, in cm^2/s , to 3 significant figures, at which the curved surface area of the pile is increasing when the height of the pile is 24 cm . (5)

.....

.....

.....

.....

.....

.....

.....

.....

.....

.....

DO NOT WRITE IN THIS AREA

DO NOT WRITE IN THIS AREA

DO NOT WRITE IN THIS AREA



Question 10 continued

DO NOT WRITE IN THIS AREA

DO NOT WRITE IN THIS AREA

DO NOT WRITE IN THIS AREA

Area with horizontal dotted lines for writing.



Question 10 continued

Area with horizontal dotted lines for writing.

DO NOT WRITE IN THIS AREA

DO NOT WRITE IN THIS AREA

DO NOT WRITE IN THIS AREA



Question 10 continued

DO NOT WRITE IN THIS AREA

DO NOT WRITE IN THIS AREA

DO NOT WRITE IN THIS AREA

Area with horizontal dotted lines for writing.

(Total for Question 10 is 12 marks)



Question 11 continued

DO NOT WRITE IN THIS AREA

DO NOT WRITE IN THIS AREA

DO NOT WRITE IN THIS AREA

Area with horizontal dotted lines for writing.



